



HSPA-23.5x

Single Polarization Broadband Parabolic Antenna

Key Features :

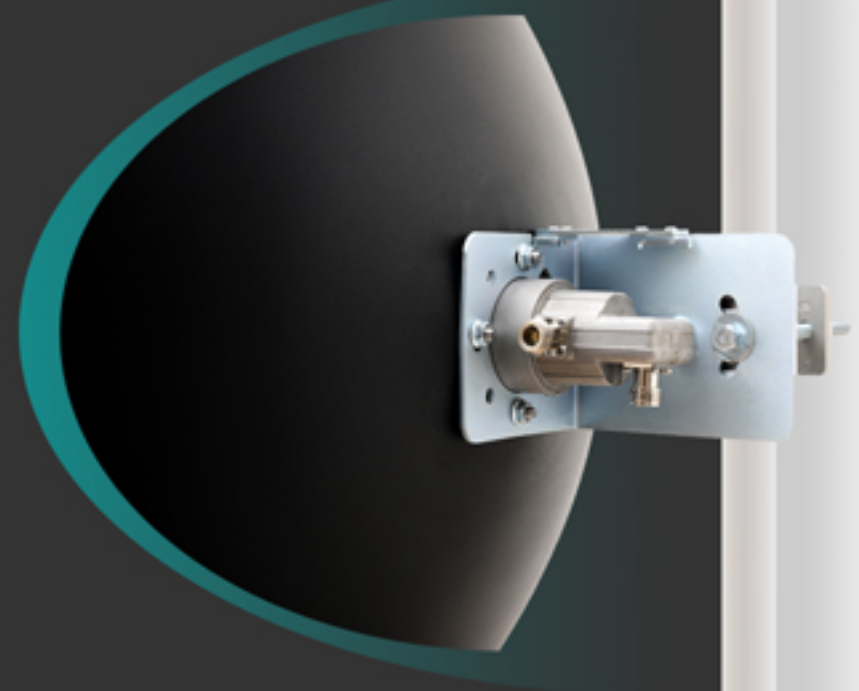
- Light weight
- Robust Structure
- Easy Installation
- Precise alignment
- High noise rejection

Applications :

- Commercial and military applications
- Point-to-point and point-to-multipoint topologies

Description :

Wilink is a leading broadband antenna brand manufactured by Pionaria Ltd for telecom, industrial and military applications with an emphasis on the 5 GHz ISM band. Since their introduction in 2003, Wilink antennas have undergone a continuous optimization process by a dedicated R&D team of highly qualified and experienced telecommunications experts resulting in the production of a wide range of standard and high performance broadband antennas with best-in-class electromagnetic parameters.



HSPA-23.5x

Single Polarization Broadband Parabolic Antenna

Electromagnetic Parameters	
Frequency Range	5.75-5.85 GHz
Gain	23.2 dBi
Polarization	Linear (VorH)
3 dB Beamwidth	8.6°
XPD	27 dB
F/B Ratio	39 dB
VSWR	1.4:1
Impedance	50
Maximum Input Power	100W
Connector Type	N-Female

Mechanical Parameters	
Diameter	38cm
Weight	2.8 kg
Shipping Dim. (L × W × H)	47 × 47 × 25 cm
Wind Load	200 km/h
Dish Material	Aluminum Alloy